

## 16.3 Scleral Lens

### Patient Types & Indications

- Keratoconus
- Pellucid Marginal Degeneration
- Post-Refractive Surgery
- Ocular Surface Disease
- Keratoglobus
- Post-Trauma
- Dry Eye Symptoms
- High Hyperopia
- High Myopia
- Presbyopia
- Astigmatism
- Aphakic
- Unhappy Soft Toric or GP Lens Wearers

### Advancements in Scleral Lens Design for Irregular and Normal Corneas

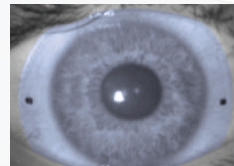
The ICD FLEXFIT 16.3mm diameter will “FLEX” from 15.5mm to 17.0mm in 0.1mm increments, based on ocular conditions, for a custom fit.

It features a 4-Zone lens design with Auto-FLEX technology, allowing increment adjustments to easily be made to the vault or landing while auto-adjusting the sagittal depth exactly to the patient’s cornea.

Due to the asymmetric nature of the sclera, the Dual Depth Periphery™ allows for the ICD FLEXFIT lens to land appropriately on the scleral, providing rotational stability<sup>1</sup> for faster fitting success and a greater patient experience.

### Dual Depth Periphery™ Toric Landing

- Provides Rotational Stability
- Improves Lens Fit
- Reduces Chair Time
- Improves Comfort
- Improves Wearing Time



Front Surface Toric Markers

*“The ICD FLEXFIT is my go-to scleral lens of choice. I have some of the most complicated patients in the country referred to my specialty lens clinic, and about 80% of the time, I do not need to make any modifications to the standard design. When I do need modifications, I can easily customize every parameter to achieve a perfect fit on very complex patients.”*

**Dr. Katie Brown**  
Little Rock, AR

### ICD FLEXFIT Toric



Available in a front surface toric for residual astigmatism

<sup>1</sup> Global researches have determined through studies that toric peripheral scleral lenses, like Dual Depth Periphery improve fit, comfort and wearing time: Visser et al (2006), Schornack (2013), Visser et al (2013).

16.3

# 14.8 Scleral Lens

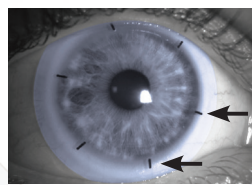
For Smaller  
 Corneas

## Advancements in Scleral Lens Design for Irregular and Normal Corneas

This 14.8mm lens design can “FLEX” from 14.5mm to 15.5mm in 0.1mm increments, based on ocular conditions, for a custom fit.

Featuring the 4-Zone lens design with unique Auto-FLEX technology, increment adjustments can easily be made to the vault or landing while auto-adjusting the sagittal depth exactly to the patient’s cornea.

Innovative scribe mark feature ensures quick assessment of the limbal vault.



Innovative Lens Scribe Marks

**Designed to deliver easy scleral lens fitting for exceptional vision, eye health and comfort.**



**ICD FLEXFIT**  
**Scleral Diagnostic Fitting Set**  
 2 Diameters, 16.3mm and 14.8mm  
 1 Fitting Philosophy  
 1 Fitting System = All-in-One Diagnostic Fitting Set  
**For Scleral Lens Success**

14.8